

**Confederated Tribes of Grand Ronde
Reservation Road Map**
Townships: 4S7W, 4S8W, 5S7W, 5S8W
Yamhill County, Oregon

Projected Coordinate System:
NAD 1983 Oregon Statewide Lambert Feet Intl

Reservation Boundary
Township and Range
Sections

Land Owner

- BLM
- CTGR
- ORM
- Hampton
- Other
- USFS

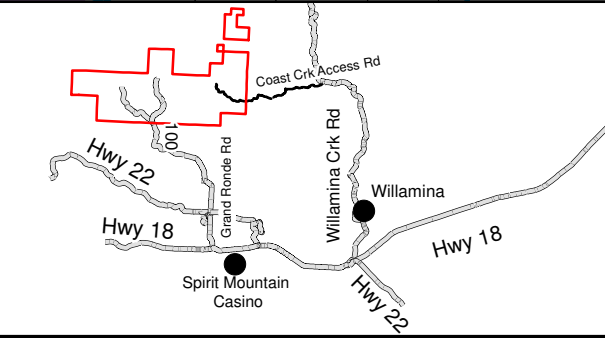
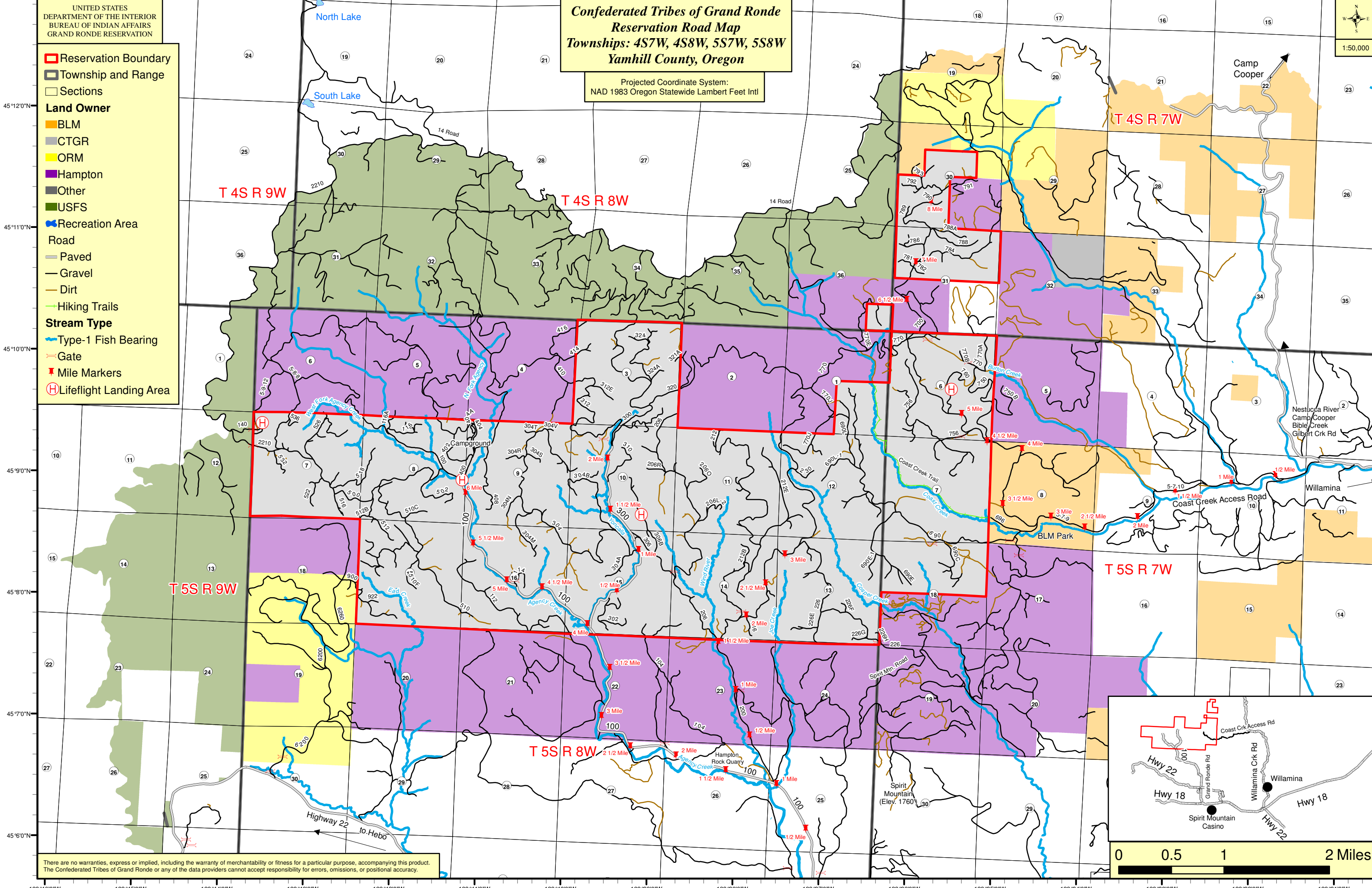
Recreation Area

Road

- Paved
- Gravel
- Dirt
- Hiking Trails

Stream Type

- Type-1 Fish Bearing
- Gate
- Mile Markers
- Lifelight Landing Area



There are no warranties, express or implied, including the warranty of merchantability or fitness for a particular purpose, accompanying this product. The Confederated Tribes of Grand Ronde or any of the data providers cannot accept responsibility for errors, omissions, or positional accuracy.

