

### Razor Clams

- **Daily Limit:** First 15 (must be retained, regardless of size/condition).
- **Season:** Waters open all year, 24 hours per day.
- **Harvest Method:** May be harvested using hand, shovel, clam gun or a tube with an opening no less than 4"

### Purple Varnish Clams

- **Daily Limit:** 72 Total.
- **Season:** Waters open all year.
- **Harvest Method:** May be taken by hand or hand powered tools.

### Bay Clams (butter, littleneck, gaper and cockle)

- **Daily Limit:** 20 in aggregate, only 12 may be gapers.
- **ALL** Gapers must be retained, regardless of size/condition.
- Butter, littleneck, and cockle may be returned to the immediate digging area if they are unbroken.
- **Season:** Waters open all year.
- **Harvest Method:** May be taken by hand or hand powered tools.

### Other Clams (softshell, piddocks, etc.)

- **Daily Limit:** First 36 in aggregate.
- **ALL** other clams listed in other clams section must be retained, regardless of size/condition
- **Season:** Waters open all year, 24 hours per day.
- **Harvest Method:** May be taken by hand or hand powered tools.

### Sea Anemone (and all other marine invertebrates)

- **Daily Limit:** 10 in aggregate
- Unwanted invertebrates may be immediately released unharmed
- **Season:** Waters open all year, 24 hours per day.
- **Harvest Method:** May be taken by hand or hand powered tools.

### Mussels

- **Daily Limit:** 72 per day
- **Season:** Waters open all year, 24 hours per day.
- **Harvest Method:** May be taken by hand or hand powered tools.

### Crabs (See Regulations for Harvest Method Requirements)

- Dungeness; Daily Limit: 12 (Males)
- Red Rock; Daily Limit: 24 any size/sex
- European Green Crab: 35 of any size or sex

## Regulation Changes!

It is important to check current state regulations before you fish, as fishing regulations are subject to changes within the current season and from year to year.

For in season changes go to:

<https://myodfw.com/articles/oregon-fishing-hunting-regulations-and-updates>

## ShellFishing Outside of the MOA?

Outside of these areas, a State Fishing License and shellfishing validation are required.

## Crab Identification

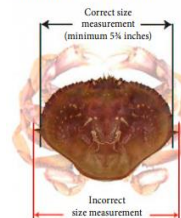
### **European Green Crab**

- Non-native invasive crab
- 3 bumps between eyes, 5 spines on each side of carapace
- Color is variable, and not the best characteristic to identify: crab can be green, black, or yellow on top of carapace and have white, yellow, orange, or reddish undersides and leg joints



### **Dungeness Crab**

Female crabs have a rounded flap on their underside. Male crabs have an elongated flap. Minimum measurement does not include points.



### Male Crab



### Female Crab



### **Red Rock Crab**

Native crab with a red fan-shaped back and large black-tipped claws.



<https://myodfw.com/crabbing-clamming>

### Contact:

*Aquatic Biologist: Brandon Weems*

*Phone: (503)879-2192*

*Email: [Brandon.weems@grandronde.org](mailto:Brandon.weems@grandronde.org)*

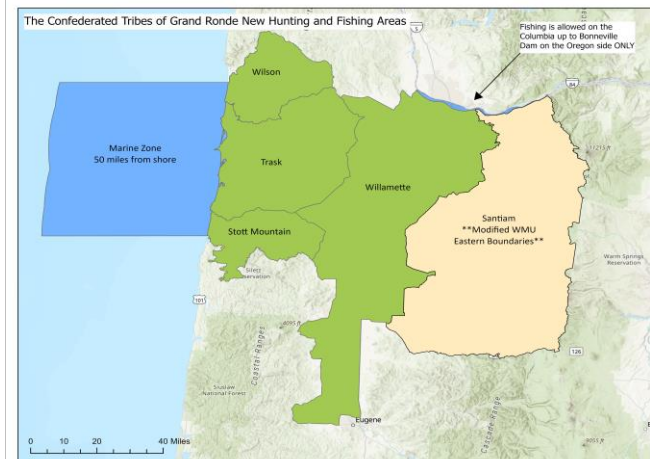
*Address: 47010 SW Hebo Road Grand Ronde, OR 97347-9712*

*Public Health Advisory: 800-448-2474*



# Confederated Tribes of Grand Ronde

## MOA Shellfish Harvest Information



All Rules and Regulations including bag limits follow state regulations.

Shellfishing in MOA approved areas require **NEW Valid Tribal Harvest License with Tribal Shellfishing validation**. Outside of these areas, a State shellfish license will be required.

**Apr-2024 Edition**

## Marine Reserves – No Harvest

### Three Arch Rocks (Oceanside) (Inset 3)

Closed to boats within a 500 foot radius around Finley Rock, Middle Rock, Shag Rock, and Seal Rock from May 1 - Sep 15 by authority of the Oregon State Marine Board.

### Netarts Bay Shellfish Preserve (Inset 4)

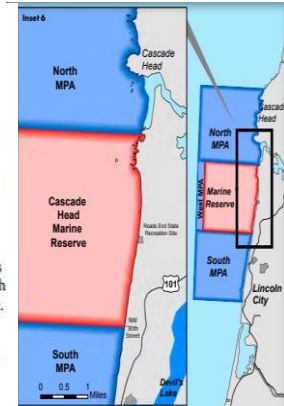
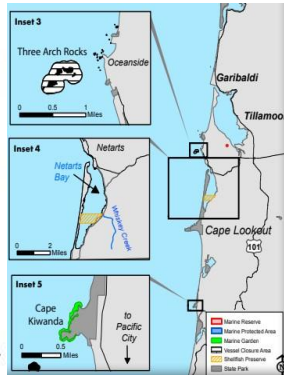
No take of clams in posted shellfish preserve, which extends from an east-west line beginning at the mouth of Whiskey Cr to an east-west line 2,700 ft south.

### Cape Kiwanda Marine Garden (Inset 5)

No take of shellfish and marine invertebrates, except single mussels may be taken for bait. Located between the sandy beaches on the north and south sides of Cape Kiwanda and includes tide pools, and rocky or sandy beaches between extreme high and low tides. Includes rocky areas abutting the sand beaches on the north and south sides of the headland.

### Cascade Head Marine Reserve and Marine Protected Areas (MPA) (Inset 6)

- **Marine Reserve:** No take of any fish, invertebrates, seaweeds, or wildlife. No deployment of fishing gear. You may transit or anchor with catch on board.
- **North MPA:** You may take salmon (by troll) and crab. You may take groundfish using hook and line from a private, non-chartered boat.
- **West MPA:** You may take salmon (by troll) and crab.
- **South MPA:** No use of net gear. You can participate in all other legal take.
- **Shoreline Area:** Harvest above the low tide line is severely restricted along rocky shores in the North MPA and on the north end of the Marine Reserve.
- These are summary rules. For complete rules and site boundary coordinates visit [oregonmarinereserves.com/rules](http://oregonmarinereserves.com/rules) or call ODFW at (541) 867-4741.



## Have a State Shellfishing Validation?

Your Daily Bag limit is combinable with the state bag limit, if you are within the boundaries of the MOA.

## Marine Shellfishing Zone



The ocean adjacent (50mi) to this area is defined as that area of the Marine Zone north latitude 45.6572 N (an east/west line drawn through The North shoreline of the Nehalem Bay to the Pacific Ocean) and a south latitude of 44.9272 N (an east/west line drawn through the North shoreline of the Siletz Bay to the Pacific Ocean).

## Clam Identification

### Purple Varnish

1 ½ - 4" shiny brown shell with purple hue.



### Cockle

1 ½ - 3" with evenly spaced ridges.



### Gaper

3 - 6" with a large gape where neck protrudes.



### Softshell

2 - 4" egg shaped shell.



### Littleneck

1.5-2.5" Shell



### Butter

2 - 4" dark colored shell with fine lines.



### Razor

3-6" Smooth brown shell, usually found on sandy beaches.

